

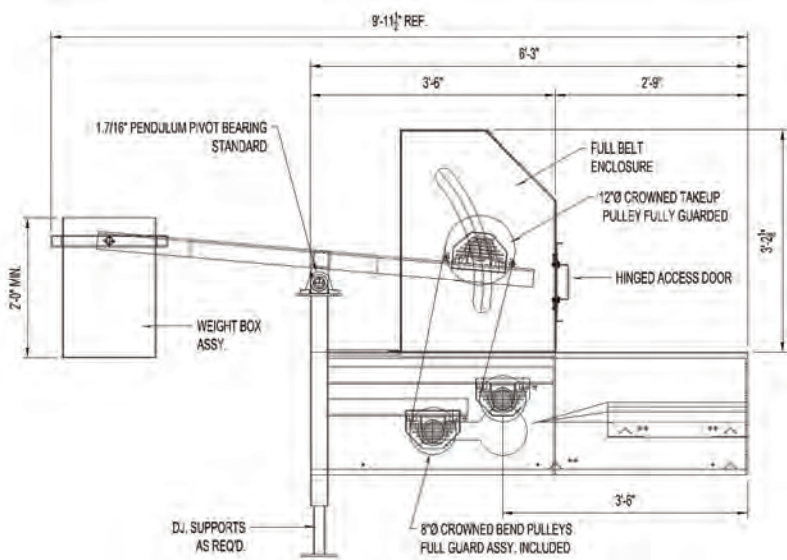


### **GTU SERIES 100: GRAVITY TAKE-UP ASSEMBLY**

Gravity take-up assemblies are typically required on conveyors exceeding 200'-0" in overall length where excessive belt stretch or additional belt tension may be required.

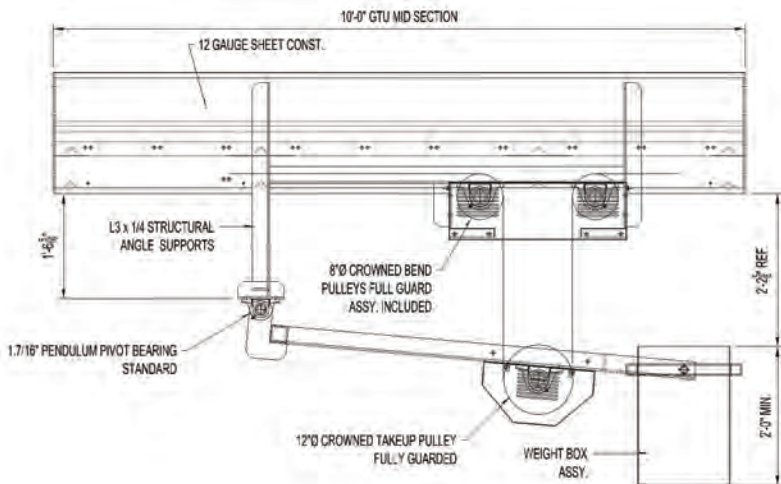
- Both under-slung and over-slung/horizontal designs are available to meet specific project requirements.
- Available for 18", 24", 30", 36", 42", and 48" belt widths.
- Bolt-in-place, under-slung and over-slung take-ups are shipped as either a complete 10'-0" mid section (under-slung), for drop-in, modular assembly or shipped as a complete take-up terminal (over-slung) to be assembled in place of the standard take-up terminal.
- Shaft sizes, pulley sizes, and weight box capacity engineered per application.
- Bearings and pulleys fully guarded to meet safety restrictions.
- Standard 7 and 12 gauge formed and welded frames, reinforced with structural angle supports.
- Standard powder coat finish, your choice of color.





### OVER-SLUNG GRAVITY TAKE-UP FEATURES:

- Fabricated from 7 gauge sheet steel with 3" square tube adjustable supports.
- Perfect choice for dryer shell-out conveyors and bulk storage unload conveyors where there is not enough room beneath the conveyor to hang a conventional gravity take-up.



### UNDER-SLUNG GRAVITY TAKE-UP FEATURES:

- Fabricated from 12 gauge sheet steel with L3 x 1/4" structural angle reinforcing and supports.
- Perfect choice for long incline and overhead transfer conveyor situations, where there is plenty of room beneath the conveyor frame to hang the pendulum frame.

### GRAVITY TAKE-UP STANDARD FEATURES:

- Modular one piece design shipped fully assembled for drop-in, bolt-in-place field installation.
- Both pan idler (PI) and tri-roller (TR) designs.
- May be fitted to any new or existing O'Mara conveyor and may also be fitted to other brands of new or existing conveyors.
- Standard 12" diameter crowned take-up pulley.
- Standard 8" diameter bend pulleys.
- Minimum 1.15/16" diameter shaft sizes, up to 2.7/16" diameter, depending on conveyor length and belt tension.
- GTU pendulum frames fabricated from L3 x 1/4" structural angle.
- Weight boxes fabricated from 12 gauge sheet steel, and reinforced with 2" square tube.
- 1.7/16" pillow block bearings for pendulum pivot.
- HD chain installed to limit over-travel and as a safety precaution in case of belt breakage or failure.
- Bearings, shafts, pulleys, and pinch points all guarded as standard feature to meet your safety requirements.

### AVAILABLE OPTIONS:

- Larger weight box capacities for longer conveyor lengths.
- Custom pivot point location to meet installation requirements.
- Full belt enclosure with locking access doors for inspection and belt tracking.



### PACKAGED FOR SHIPMENT

All units ship fully assembled and skidded for protection as shown.